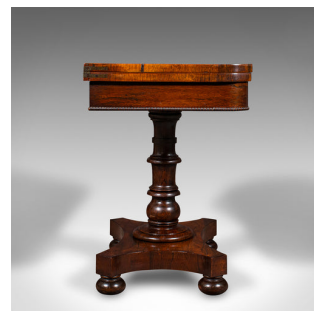


Antique Fold Over Card Table, English, Extending, Games, Console, Regency, 1820



DESCRIPTION

Our Stock # 25042

This is an antique fold-over card table. An English, rosewood games or console table, dating to the Regency period, circa 1820.

<li class="p1">Superb craftsmanship distinguishes this fine gentleman's card table

<li class="p1">Displays a desirable aged patina and in good order

<li class="p1">Select stocks present attractive grain interest throughout

<li class="p1">Deep russet and caramel hues beneath a quality wax polish finish

<li class="p1">Rotating through 90-degrees, the table opens out to reveal the playing surface

<li class="p1">The green baize presents a splendid fit and an invitingly tactile finish

<li class="p1">Beneath the folding top, a useful card box sits within the stout apron section

<li class="p1">Raised upon a gently tapered support, accentuated with bold collared detail

<li class="p1">The base of distinctive hyperboloid form with a deep profile

DIMENSIONS

Max Width: 91.5cm (36")

Max Depth: 46cm (18")

Max Height: 70.5cm (27.75")

Extended Width: 91.5cm (36")

Extended Depth: 91.5cm (36")

Extended Height: 67.5cm (26.5")



Search [London Fine](#) for #25042, or scan the QR code for more photos and details

+44 (0) 207 1833 511

London Fine Ltd
The Antique Village
The Old Whiteways Cider Factory
Hele, Devon, EX5 4PW

sales@londonfine.co.uk
E. & O. E.