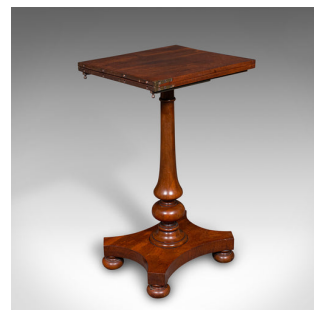


Antique Calligrapher's Extending Table, English, Cantilever, Chairside, Regency



DESCRIPTION

Our Stock # 25055

This is an antique calligrapher's extending table. An English, mahogany cantilever chairside or wine table, dating to the Regency period, circa 1820.

- <li class="p1">Fascinating metamorphic table with wonderful craftsmanship
- <li class="p1">Displays a desirable aged patina and in good order
- <li class="p1">Select stocks present deep caramel hues and fine grain interest
- <li class="p1">Long brass hinges offer deep golden tones

- <li class="p1">Two-piece top folds over, resting on extending lopers
- <li class="p1">Superb turned column with collared and bulb finish
- <li class="p1">Raised upon a striking hyperboloid base with deep profile
- <li class="p1">The whole standing upon a quartet of bun feet

This is a delightful and rare antique calligrapher's extending table, with a superb folding form. Solid joints and construction, delivered waxed, polished and ready for the home.

Search [London Fine for #25055](#) , or scan the QR code for more photos and details

DIMENSIONS

Closed Width: 41cm (16.25")
 Closed Depth: 35.5cm (14")
 Closed Height: 71cm (28")
 Extended Width: 81.5cm (32")
 Extended Depth: 35.5cm (14")
 Extended Height: 69.5cm (27.25")

LIST PRICE

£1,495.00

