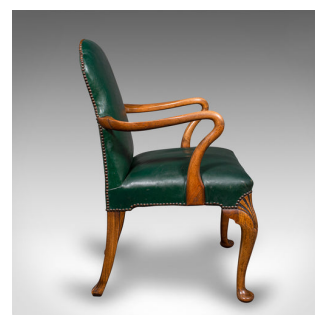


Antique Clerk's Desk Chair, English, Beech, Leather, Elbow Seat, Home, Office



DESCRIPTION

Our Stock # 25003

This is an antique clerk's desk chair. An English, beech and leather elbow seat, dating to the early 20th century, circa 1920.

- Appealing example, with a tasteful office aesthetic and great colour
- Displays a desirable aged patina and in good order
- Beech stocks present warm caramel hues and fine grain interest
- Attractive British Racing Green leather finished with press stud trim
- Amply cushioned in the traditional manner, for a fine seat
- Dressed back rest with plump cushioning over a generously padded saddle
- Seat height set at a desirably comfortable 48cm (19")
- Serpentine arms enclose the seat, with swept supports
- Fascinating cabriole front legs with scallop shell carvings to each knee

Search [London Fine for #25003](#) , or scan the QR code for more photos and details

DIMENSIONS

- Max Width: 60.5cm (23.75")
- Max Depth: 59cm (23.25")
- Max Height: 92.5cm (36.5")
- Seat Width: 47cm (18.5")
- Seat Depth: 42cm (16.5")
- Seat Height: 48cm (19")

