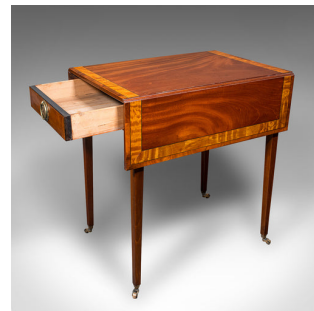


Antique Pembroke Table, English, Drop Leaf, Occasional, Tea, Regency, Circa 1820



DESCRIPTION

Our Stock # 25089

This is an antique Pembroke Table. An English, mahogany and satinwood drop-leaf occasional or tea table, dating to the Regency period, circa 1820.

<li class="p1">Beautifully presented small table, with the benefit of extending leaves

<li class="p1">Displays a desirable aged patina and in good order

<li class="p1">Select stocks present fine grain interest throughout

<li class="p1">Rich caramel hues accentuated with lighter Satinwood inlays

<li class="p1">Usefully compact standard form, perfect for storage between use

<li class="p1">Extending gracefully upon twin flying arms, presenting a kneehole height of 62.5cm (24.5")

<li class="p1">Inset drawer to one side, dressed with a striking brass hoop pull, over a decorative backplate

<li class="p1">Raised upon a quartet of slender, tapering legs and riding upon brass castors

This is an attractive antique Pembroke Table, with extending leaves for occasional use. A visual delight and finely crafted in the Regency tradition. Solid joints and construction delivered ready for the home.

+44 (0) 207 1833 511

Search [London Fine](#) for #25089 , or scan the QR code for more photos and details

DIMENSIONS

Max Width: 49.5cm (19.5")

Max Depth: 70cm (27.5")

Max Height: 76cm (30")

Extended Width: 91.5cm (36")

Extended Depth: 70cm (27.5")

Extended Height: 76cm (30")

LIST PRICE

£1,495.00



sales@londonfine.co.uk

E. & O. E.

London Fine Ltd
 The Antique Village
 The Old Whiteways Cider Factory
 Hele, Devon, EX5 4PW