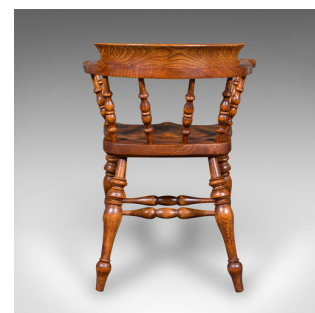
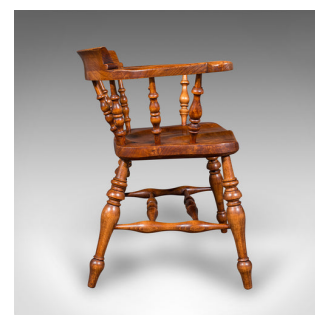


Antique Country House Captain's Chair, English Elm, Smoker's Bow Seat, Victorian



DESCRIPTION

Our Stock # 25109

This is an antique country house captain's chair. An English, elm smoker's bow or elbow seat, dating to the late Victorian period, circa 1900.

- Superb country house appeal with the classic bow form
- Displaying a desirable aged patina and in good original order
- Select elm stocks show excellent grain interest throughout
- Graced with appealing caramel hues to the delightful form
- The upper rail crowned with a prominent arched and bowed back rest
- Baluster turned spindles rise obliquely supporting the striking horseshoe armrest
- Each arm terminates in out-turned scrolled hand grips
- Saddle deeply sculpted with defined leg scallops
- Standing upon a quartet of stout baluster legs united by a 'H' stretcher

Search [London Fine for #25109](#) , or scan the QR code for more photos and details

DIMENSIONS

- Max Width: 65cm (25.5")
- Max Depth: 53.5cm (21")
- Max Height: 77.5cm (30.5")
- Seat Width: 39.5cm (15.5")
- Seat Depth: 40cm (15.75")
- Seat Height: 49.5cm (19.5")

