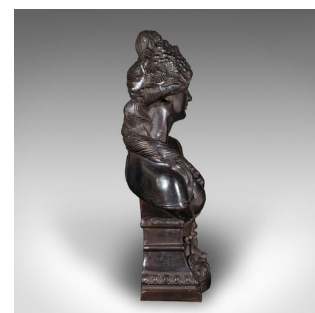
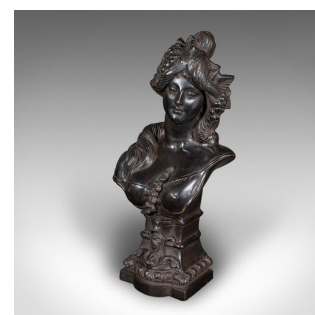
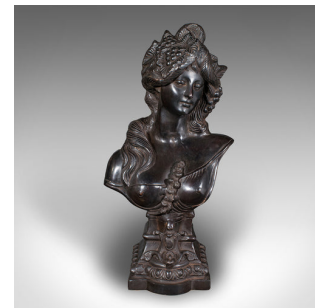


Heavy Vintage Bohemian Female Bust, Continental, Bronze, After Art Nouveau, 1930



DESCRIPTION

Our Stock # 25091

This is a vintage Bohemian female bust. A Continental, bronze figural statue in Art Nouveau taste, dating to the early 20th century, circa 1930.

- Wonderful Art Nouveau revival bust, with superb detail
- Displays a desirable aged patina and in good order
- Deep chestnut hues add fascinating tonality to the form
- With her head tilted, the woman wears grapes in her well detailed hair
- Appealing detail throughout and of elegant proportion
- Substantial in the hand with a weight of 11.72kg (25.83 lb)

This is a striking vintage Bohemian female bust, with an appealing Art Nouveau inspired form. Delivered ready to display.

Search [London Fine for #25091](#) , or scan the QR code for more photos and details

DIMENSIONS

Max Width: 26.5cm (10.5")

Max Depth: 17cm (6.75")

Max Height: 55cm (21.75")

LIST PRICE

£1,595.00

