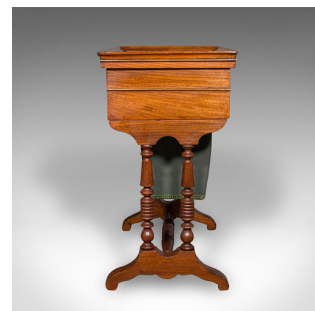
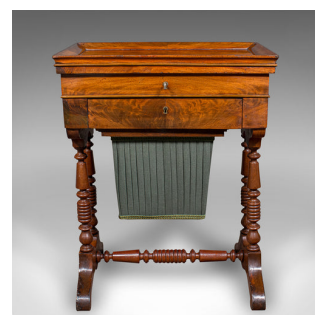


Antique Ladies Work Box, English, Flame, Sewing, Haberdashery Table, Victorian



DESCRIPTION

Our Stock # 25112

This is an antique ladies work box. An English, flame mahogany sewing or haberdashery table, dating to the Victorian period, circa 1870.

<li class="p1">Beautifully figured example with delightful features and form

<li class="p1">Displays a desirable aged patina and in good order

<li class="p1">Select flame socks present fine grain interest

<li class="p1">Rich caramel hues grace the casework throughout

<li class="p1">Appealing tray top with raised sides ideal for beadwork and other delicate items

<li class="p1">Opens to a clear, bright mirror upon the lid's reverse

<li class="p1">Charming foliate decor covering the storage tray, with four lidded compartments

<li class="p1">Inset lock to the lid – untested, key absent

<li class="p1">Storage drawer dressed with circular lock escutcheon – key present

Search [London Fine for #25112](#) , or scan the QR code for more photos and details

DIMENSIONS

Max Width: 52.5cm (20.75")

Max Depth: 35.5cm (14")

Max Height: 66.5cm (26.25")

Drawer Interior Width: 34.5cm (13.5")

Drawer Interior Depth: 22cm (8.75")

Drawer Interior Height: 5.5cm (2.25")

LIST PRICE

£985.00

