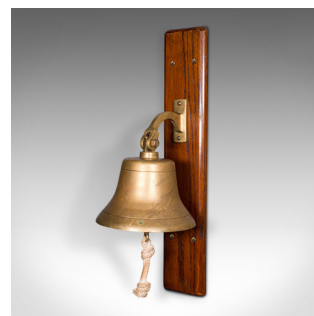
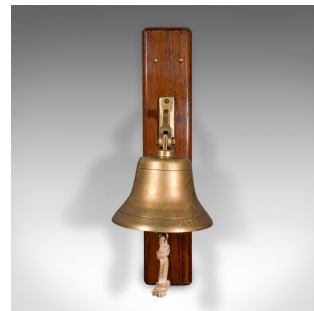


Antique School Bell, English, Oak, Brass, Wall Mounted, Dinner Chime, Edwardian



DESCRIPTION

Our Stock # 25176

This is an antique school bell. An English, oak and brass wall mounted dinner chime, dating to the Edwardian period, circa 1910.

- <li class="p1">Raise the alarm or signal for dinner with this confident, charming bell
-

This is a superb antique school bell, with a loud tone and appealing Edwardian taste. Delivered ready to mount.

Search [London Fine for #25176](#) , or scan the QR code for more photos and details

DIMENSIONS

- Max Width: 20cm (7.75")
- Max Depth: 23cm (9")
- Max Height: 59cm (23.25")
- Mounting Plinth Width: 11cm (4.25")
- Mounting Plinth Height: 59cm (23.25")

