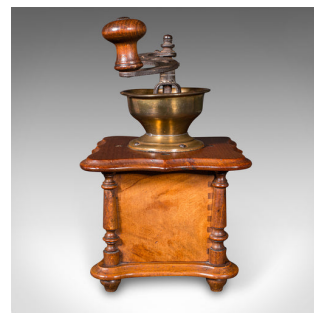
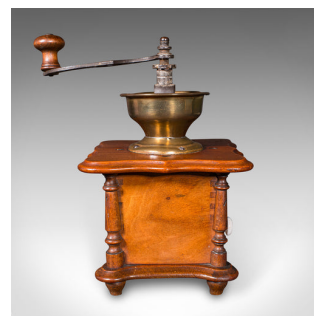
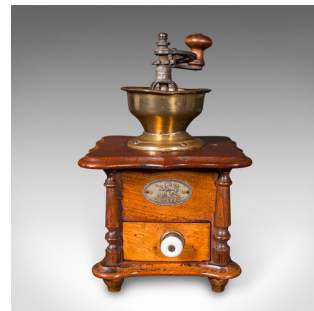


Vintage Manual Coffee Grinder, German, Oak, Rotary Bean Mill, Art Deco, C.1930



DESCRIPTION

Our Stock # 25183

This is a vintage manual coffee grinder. A German, oak and brass rotary bean mill, dating to the Art Deco period, circa 1930.

- <li class="p1">Appealing, tactile German example in working order
- <li class="p1">Displays a desirable aged patina and in good, original condition
- <li class="p1">Oak stocks present fine grain interest and wisps of medullary rays
- <li class="p1">Brass and cast iron adding contrasting tonality to the whole

- <li class="p1">Turned ferrule atop the elegant grinding handle
- <li class="p1">Rotary mechanism within the flared bean repository
- <li class="p1">Grinds directly into the removable tray, with enamel handle
- <li class="p1">Maker's plaque to the fascia for Ereka, with lion motif

This is a fascinating vintage manual coffee grinder, with appealing colour and in working order. Delivered ready to enjoy or display.

Search [London Fine for #25183](#) , or scan the QR code for more photos and details

DIMENSIONS

Max Width: 15cm (6")
 Max Depth: 22cm (8.75")
 Max Height: 24.5cm (9.75")

LIST PRICE

£695.00

