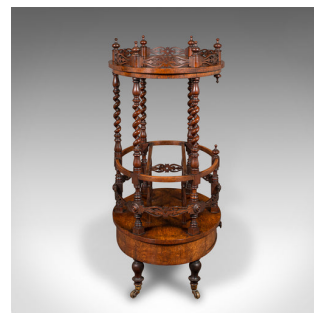
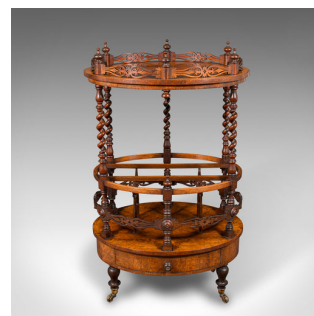
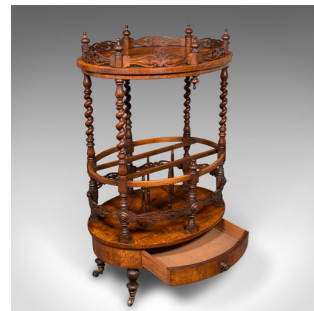


## Antique Cocktail Service Stand, English, Walnut, Canterbury, Whatnot, Victorian



### DESCRIPTION

Our Stock # 25202

This is an antique cocktail service stand. An English, walnut Canterbury or whatnot, dating to the early Victorian period, circa 1840.

<li class="p1">Exceptional drawing room appeal, with striking decorative craftsmanship

<li class="p1">Displaying a desirable aged patina and in very good order

<li class="p1">Quality walnut stocks present superb grain interest

<li class="p1">Graced with rich caramel hues throughout

<li class="p1">Gallery top enclosed with attractive pierced fretwork

<li class="p1">Oval form with dashing barley twist supports

<li class="p1">Generous bottle rack within, ideal storage for multiple wines and spirits

<li class="p1">Small drawer to the base, with room for bottle openers and other accessories

<li class="p1">Riding smoothly upon a quartet of brass castors beneath short turned legs

Search [London Fine for #25202](#) , or scan the QR code for more photos and details

### DIMENSIONS

Max Width: 60.5cm (23.75")

Max Depth: 45.5cm (18")

Max Height: 101cm (39.75")

