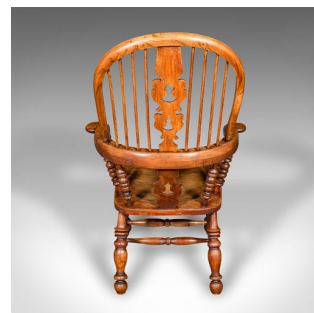
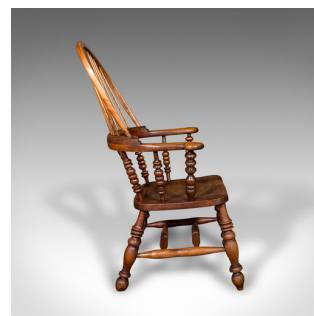


## Antique Yorkshire Armchair, English, Elm, Country House, Elbow Seat, Victorian



## DESCRIPTION

Our Stock # 25255

This is an antique Yorkshire armchair. An English, elm and ash country house elbow seat, dating to the Victorian period, circa 1870.

<li class="p1">Stunning Yorkshire style chair with Country House appeal

<li class="p1">Displays a desirable aged patina and in good order

<li class="p1">Select elm and ash stocks present fine grain interest

<li class="p1">Graced with warm caramel hues throughout

<li class="p1">Fascinating hoop back rest, with turned lathe form

<li class="p1">Distinctive, two piece pierced fretwork back splat

<li class="p1">Broad horse shoe arm rest terminates in out turned knuckles

<li class="p1">Arm supported upon collar and bobbin turned oblique supports

<li class="p1">Shaped saddle squab with generous space between the arms

Search [London Fine for #25255](#) , or scan the QR code for more photos and details

## DIMENSIONS

Max Width: 68cm (26.75")

Max Depth: 64cm (25.25")

Max Height: 108.5cm (42.75")

Seat Width: 41cm (16.25")

Seat Depth: 39.5cm (15.5")

Seat Height: 42cm (16.5")

## LIST PRICE

£1,195.00

