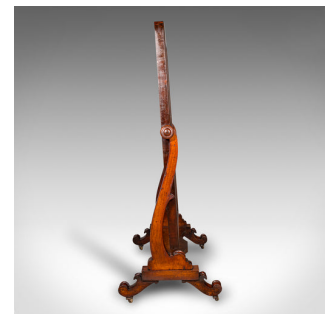


Tall Antique Gentleman's Outfitters Dressing Mirror, Cheval, Victorian, C.1840



**DESCRIPTION**

Our Stock # 25230  
This is a distinguished English gentleman's outfitter's dressing mirror, dating to the early Victorian period, circa 1840. Crafted from exquisite flame mahogany, this superb Cheval mirror boasts superb proportion, refined craftsmanship, and smooth articulation.

- <li class="p1">Classic early Victorian elegance – A fine example of 19th century English furniture
- <li class="p1">Exceptional flame mahogany stocks – Rich deep hues with striking grain figuring
- <li class="p1">Full-length dressing mirror plate – Providing a quality, bright reflection with minimal foxing
- <li class="p1">Adjustable tilt mechanism – Articulates smoothly within shaped side supports for the ideal viewing angle

- <li class="p1">Excellent proportion, easily accommodating a full-length dressing view
- <li class="p1">Well-balanced and sturdy – Designed for daily use, with a reassuringly solid stance
- <li class="p1">Graceful cabriole legs – Squat in form, exuding timeless sophistication
- <li class="p1">Smooth mobility – Rides upon a quartet of brass and ceramic castors

+44 (0) 207 1833 511

This is a handsome Victorian gentleman's outfitter's dressing mirror, available at our retail dressin ...

Search London Fine for #25230 or scan the QR code for more photos and details

**DIMENSIONS**

- Max Width: 99cm (39")
- Max Depth: 61cm (24")
- Max Height: 163cm (64.25")
- Mirror Plate Width: 68cm (26.75")
- Mirror Plate Height: 124cm (48.75")

**LIST PRICE**

£2,950.00



London Fine Ltd

The Antique Village  
The Old Whiteways Cider Factory  
Hele, Devon, EX5 4PW

sales@londonfine.co.uk

E. & O. E.