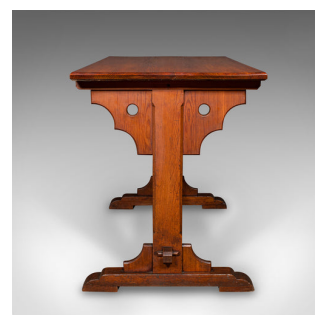


Antique Hall Table, Victorian, Pitch Pine, Kitchen, Ecclesiastical, Circa 1870



DESCRIPTION

Our Stock # 25235

This is a superb Victorian period hall table, showcasing Gothic Revival influences in solid pitch pine, circa 1870. This characterful antique presents rich caramel hues and fine grain interest, perfect for hallway, kitchen, or ecclesiastical settings.

- <li class="p1">Distinctive ecclesiastical form, exuding Victorian Gothic charm
- <li class="p1">Solid pitch pine construction, displaying fine grain detail and warm patina
- <li class="p1">Comfortable knee hole size, ideal for intimate dining or practical workspace
- <li class="p1">Striking demi-lune apron, accentuating the knee hole and ends with elegant shaping
- <li class="p1">Sturdy trestle feet with robust block toes, ensuring stability and presence
- <li class="p1">Displays beautifully with timeless craftsmanship and historical appeal

This is a handsome antique table, perfect for period interiors, collectors of Victorian furniture, or those seeking a unique, heritage-inspired statement piece. Solid joints and construction, delivered ready for the home or institution.

Search [London Fine for #25235](#) , or scan the QR code for more photos and details

DIMENSIONS

Max Width: 107.5cm (42.25")
 Max Depth: 60cm (23.5")
 Max Height: 77.5cm (30.5")
 Knee hole Width: 84.5cm (33.25")
 Knee hole Height: 75cm (29.5")

LIST PRICE

£1,495.00

