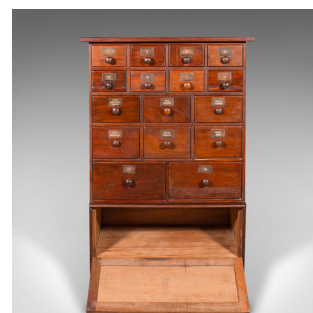
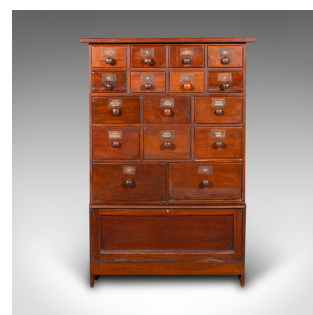


## Antique Apothecary Chest of Drawers, English, Chemist's Shop Cabinet, Victorian



### DESCRIPTION

Our Stock # 25180

This is a rare and unusual antique Victorian apothecary chest, offering superb storage and period character, circa 1880. This 16-drawer chemist's shop cabinet showcases fine craftsmanship, with original fascia labels and elegant mahogany tones.

- Classic apothecary cabinet, ideal for collectors, interior designers, or Victorian storage solutions

- Rich mahogany and Victorian pine construction, displaying warm hues and fine grain interest

- Fascinating original bronze fascia labels, featuring a mix of numbered and Latin abbreviations

- 16 drawers, each dressed with turned wooden pulls for effortless access

- Lower drop-front storage hutch, complete with a small pull handle

- Versatile size, perfect for home offices, retail spaces, or stylish kitchen organisation

This is a handsome antique chemist's cabinet, perfect for period interiors, from office storage to distinguished country house kitchen organisation. Solid joints and construction delivered ready for the home

### DIMENSIONS

Max Width: 77.5cm (30.5")

Max Depth: 40cm (15.75")

Max Height: 116.5cm (45.75")

Lower Compartment Width: 68cm (26.75")

Lower Compartment Depth: 36cm (14.25")

Lower Compartment Height: 24cm (9.5")

### LIST PRICE

£2,950.00



Search London Fine for #25180, or scan the QR code for more photos and details.  
+44 (0) 207 1855 511

London Fine Ltd  
The Antique Village  
The Old Whiteways Cider Factory  
Hele, Devon, EX5 4PW

sales@londonfine.co.uk  
E. & O. E.