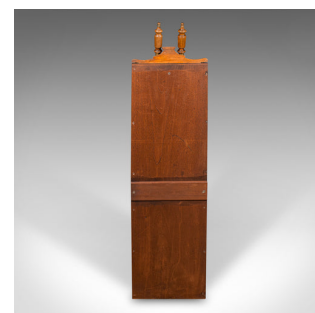
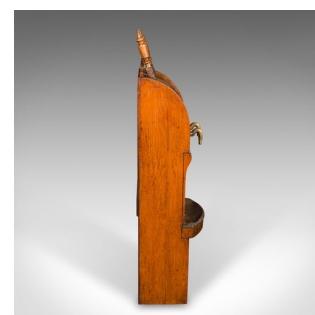


Antique Draught Ale Tap Stand, English, Tavern Beer Pump, Georgian, Circa 1800



DESCRIPTION

Our Stock # 25172

This is a rare and unusual Georgian period draught tap stand, offering classic tavern charm, circa 1800. This antique, self-contained public house beer pump presents fine craftsmanship with a desirable aged patina.

- Distinctive antique tap stand, ideal for tavern-inspired décor or breweriana collectors
- Pair of draught ale pumps, featuring quality brass fittings and turned beech handles
- Tactile pump handles, providing a reassuring and smooth drawing action
- Desirably aged drip tray, sitting above a removable fascia for pump mechanism access
- Crafted in oak, elm, and fruitwood, boasting warm hues and rich grain interest
- Good display order, showcasing a delightfully aged, Georgian patina
- Fascinating decorative addition, or could be restored to function

This is a superb antique beer pump, perfect for traditional pub settings, period interiors, or breweriana collections. Solid joints and construction, delivered ready to display.

Search [London Fine for #25172](#) , or scan the QR code for more photos and details

DIMENSIONS

Max Width: 32cm (12.5")

Max Depth: 30.5cm (12")

Max Height: 122cm (48")

