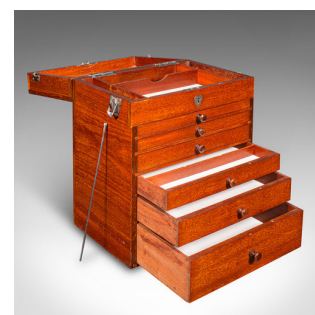
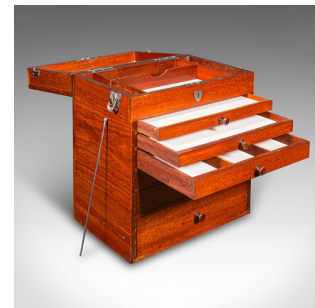


Antique Specimen Collector's Chest of Drawers, English, Artist's Case, Edwardian



DESCRIPTION

Our Stock # 25236
 This is a fine antique specimen collector's chest of drawers. An English supply cabinet in walnut and milk glass, dating to the Edwardian period, circa 1910. Originally commissioned as a dentist's case, this charming piece offers exceptional versatility for art supplies, crafting tools or haberdashery.

- <li class="p1">Superb Edwardian craftsmanship, with quality walnut stocks displaying rich caramel hues and fine grain interest
- <li class="p1">Reassuring solidity with a weight of 12.2kg (26.9 lb)
- <li class="p1">Six graduated drawers, ideal for the organisation of smaller items – from brushes to threads or specimens
- <li class="p1">Top-mounted compartment, offering additional storage beneath a hinged lid
- <li class="p1">Appealing milk glass drawer linings, in original condition, with minor historic cracking to a single pane adding authentic charm

<li class="p1">Chromed brass carry handle to the lid, partnered with a personalised name plaque for D.H. Barrett

<li class="p1">Dual chromed clasps secure the lid firmly in place for safe storage

<li class="p1">Each drawer held shut with a long, removable securing pin

+44 (0) 207 1853 510 London Fine Ltd, a maker of fine profes ...

Search [London Fine for #25236](#) , or scan the QR code for more photos and details
 London Fine Ltd
 The Antique Village
 The Old Whiteways Cider Factory
 Hele, Devon, EX5 4PW

DIMENSIONS

Max Width: 36cm (14.25")
 Max Depth: 25.5cm (10")
 Max Height: 42cm (16.5")

LIST PRICE

£985.00

