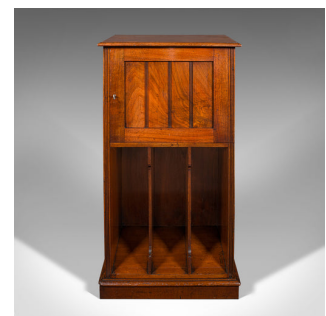


Antique Music Cabinet, English, Walnut, Drawing Room, Side Cabinet, Victorian



DESCRIPTION

Our Stock # 25087

This is a fine antique music cabinet. An English walnut drawing room side cabinet, dating to the late Victorian period, circa 1890. Versatile and refined, offering elegant storage in the classic tradition.

- Handsome cabinet with concealed drawers and sheet music divisions, ideal for a range of storage uses
- Door dressed with an inset working lock and supplied with the original key
- Quality walnut stocks present rich caramel hues and fine grain interest throughout
- Upper section with a bank of concealed drawers, each finished with recessed brass cup handles
- Lower configured with three vertical sheet music divisions, perfect for documents or display
- Classic Victorian styling, suitable for a drawing room, study or hallway setting

This is an elegant and practical Victorian music cabinet, with enduring charm and versatile storage potential. A wonderful addition to any period interior or collection of 19th century furniture. Solid joints and construction, delivered ready for the home.

DIMENSIONS

- Max Width: 49.5cm (19.5")
- Max Depth: 37.5cm (14.75")
- Max Height: 91.5cm (36")
- Division Width: 12.5cm (5")
- Division Depth: 34cm (13.5")
- Division Height: 46cm (18")



Search [London Fine](#) for #25087, or scan the QR code for more photos and details

+44 (0) 207 1833 511

London Fine Ltd
The Antique Village
The Old Whiteways Cider Factory
Hele, Devon, EX5 4PW

sales@londonfine.co.uk
E. & O. E.