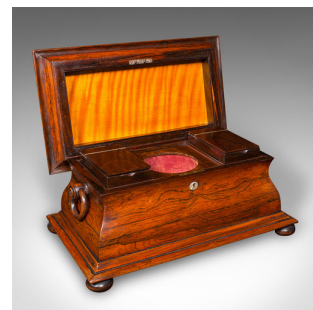


Antique Sarcophagus Loose Leaf Tea Caddy, Drawing Room, English, Regency, C.1820



DESCRIPTION

Our Stock # 25114

This is a fine antique sarcophagus tea caddy. An English, rosewood and satinwood loose leaf tea case, dating to the Regency period, circa 1820. Of distinguished form and richly toned appearance, this tea caddy exemplifies refined early-19th century taste.

- Elegant sarcophagus form with fine architectural lines and confident Regency styling

- Crafted from superb antique stocks, offering exceptional grain interest and deep caramel hues

- Original interior fitted with a pair of covered tea canisters and a central mixer glass recess (10cm diameter)

- Adorned with a pearline lock escutcheon to the front fascia – key absent

- Decorative satinwood panel to the lid reverse, displaying vibrant amber and golden tones

- Side dressed with chamfered ring drop handles in brass, adding symmetry and balance

- Raised upon small bun feet in keeping with the sarcophagus style

DIMENSIONS

Max Width: 43cm (17")

Max Depth: 26.5cm (10.5")

Max Height: 23cm (9")

LIST PRICE

£1,495.00



This is a captivating and collectible Regency tea caddy, with great visual appeal and a rich history. In addition to any collection of period London fine antiques, this 19th century antique is a solid investment. Solid joints and con...

sales@londonfine.co.uk

E. & O. E.

Search [London Fine for #25114](#), or scan the QR code for more photos and details

The Antique Village
The Old Whiteways Cider Factory
Helm, Devon, EX5 4PW