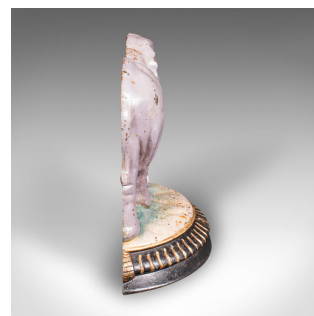


Antique Elephant Doorstop, English, Great Exhibition, Door Keeper, Victorian



DESCRIPTION

Our Stock # 25298

This is a delightful antique elephant doorstop. An English, handpainted cast iron decorative door keeper or mantel ornament, dating to the early Victorian period, circa 1850. A fine example in the Great Exhibition taste, rich with character and original finish.

<li class="p1">Charming African elephant form, sculpted with a naive charm and tactile detail

<li class="p1">Presented in original handpainted finish, with endearing patination through years of careful display

<li class="p1">Crafted from quality cast iron, offering a satisfying weight of 3.286kg (7.24 lb)

<li class="p1">Perfect for use as a functional doorstop, decorative fireside interest or mantelpiece accent

<li class="p1">Appeals with bold colours and delightful facial expression, capturing a mid-19th century aesthetic

<li class="p1">Fine example of Victorian decorative arts, evocative of interest in the exotic during the Great Exhibition era

<li class="p1">Stable base and solid construction make for a lasting eye-catching addition to any room

+44 (0) 207 1833 511

This is a superbly whimsical and practical door stop., This Victorian doorstop will grace any traditional interior, or serve as a thoughtful gift for the collector.

Search London Fine for #25298 , or scan the QR code for more photos and details

DIMENSIONS

Max Width: 33cm (13")

Max Depth: 11cm (4.25")

Max Height: 24.5cm (9.75")

LIST PRICE

£895.00



London Fine Ltd

The Antique Village

The Old Whiteways Cider Factory

Hele, Devon, EX5 4PW

sales@londonfine.co.uk

E. & O. E.