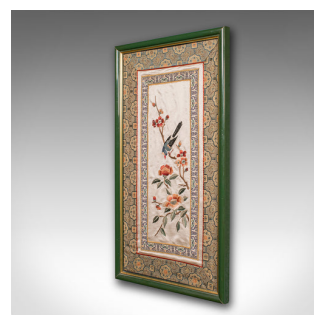
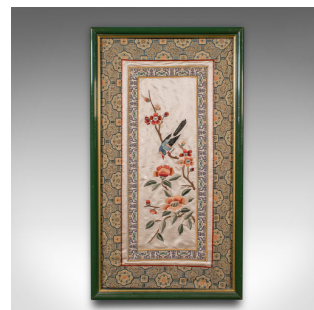


Vintage Framed Silkwork Panel, Japanese, Embroidered, Needlepoint, Art Deco



DESCRIPTION

Our Stock # 25260

This is a vintage framed decorative silkwork panel. A Japanese, embroidered silk cotton needlepoint scene, dating to the Art Deco period, circa 1930. A delightful display of traditional craftsmanship with colourful decorative appeal.

<li class="p1">Charming Oriental embroidery, showcasing fine Japanese needlework in silk and cotton threads

<li class="p1">Depicts a colourful natural scene, with lush foliage and a visiting small bird at its centre

<li class="p1">Set within a bright glazed frame, offering a clear display and protective presentation

<li class="p1">Subtle sheen to the silk threads catches the light, enhancing the detail and depth

<li class="p1">Rear dressed with a hanging wire, ready to mount

This vintage framed silk panel is a finely executed example of Japanese textile artistry, and would make a graceful addition to any decorative wall display or textile collection. Delivered ready to mount.

DIMENSIONS

Max Width: 26cm (10.25")

Max Depth: 2.5cm (1")

Max Height: 46cm (18")

Panel Width: 22.5cm (8.75")

Panel Height: 42.5cm (16.75")

LIST PRICE

£295.00



Search [London Fine for #25260](#) , or scan the QR code for more photos and details

+44 (0) 207 1833 511

London Fine Ltd
 The Antique Village
 The Old Whiteways Cider Factory
 Hele, Devon, EX5 4PW

sales@londonfine.co.uk
 E. & O. E.