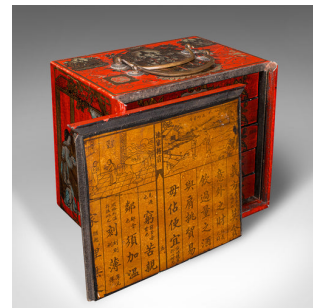


Vintage Decorative Mahjong Case, Oriental, Lacquer, Gaming Box, Art Deco, C.1940



DESCRIPTION

Our Stock # 25289

This is a vintage decorative Mahjong case. An Oriental, red lacquered gaming box, dating to the Art Deco period, circa 1940. Distinctive and highly detailed, this superb example displays rich character and period craftsmanship.

- Striking cinnabar red lacquer finish, adorned with charming figural decoration throughout

- Composed of five trays, neatly stored behind a drop-in fascia with hand-drawn reverse artwork

- Contains a complete suite of 144 gaming tiles, each crafted from bamboo and celluloid

- Includes two small dice housed within the upper tray, ready for play

- Dressed with a pair of tactile brass carry handles, aiding movement and enhancing presentation

- Displays a pleasing aged patina, with subtle wear to the lacquer adding to its vintage appeal

This vintage Mahjong case is a delightful example of Art Deco period craftsmanship and would grace any collection or add decorative charm to a cabinet or tabletop. Delivered ready to enjoy.

+44 (0) 207 1833 511

Search [London Fine](#) for #25289 , or scan the QR code for more photos and details

London Fine Ltd
The Antique Village

The Old Whiteways Cider Factory
Hele, Devon, EX5 4PW

DIMENSIONS

Max Width: 21cm (8.25")

Max Depth: 14cm (5.5")

Max Height: 18cm (7")



sales@londonfine.co.uk

E. & O. E.