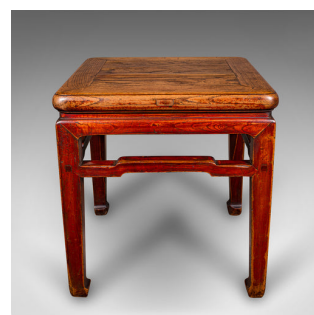


Antique Chabudai Table, Japanese, Elm, Tea, Kneeling, Meiji, Victorian, C.1900



DESCRIPTION

Our Stock # 25331

This is an antique Chabudai table. A Japanese, low tea or kneeling table crafted in Asian elm during the Meiji period, dating to the late Victorian era, circa 1900. A charming and tactile piece, rich in colour and cultural appeal.

- Low profile design, traditionally used for tea ceremonies or floor seating
- Crafted from Asian elm, presenting wonderful grain interest throughout
- Superb figuring to the tabletop with warm caramel hues and natural patina
- Gently chamfered corners soften the square form
- Stands upon an attractive red finished base, adding a subtle decorative contrast
- Unusual table feet terminate in distinctive arrow form
- Ideal for interiors with a Zen aesthetic, or as a characterful coffee table or display base
- Lightly timeworn with desirable signs of age, enhancing authenticity

This antique Chabudai is a superb example of Japanese furniture tradition, presenting as a fine decorative table for those seeking quality craftsmanship and distinctive style. Solid joints and construction, delivered waxed, polished and ready for the home

DIMENSIONS

Max Width: 45.5cm (18")
 Max Depth: 45.5cm (18")
 Max Height: 48cm (19")

LIST PRICE

£985.00



Search London Fine for #25331, or scan the QR code for more photos and details.
 +44 (0) 207 1855 511

London Fine Ltd
 The Antique Village
 The Old Whiteways Cider Factory
 Hele, Devon, EX5 4PW

sales@londonfine.co.uk
 E. & O. E.