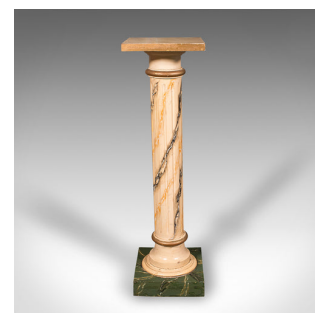
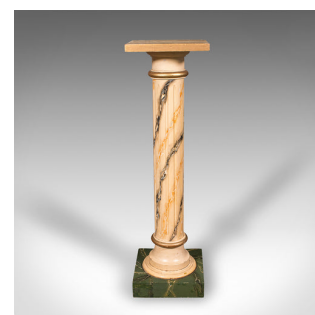


Antique Torchere Column, English, Pine, Faux Marble, Bust Stand, Victorian, 1900



**DESCRIPTION**

Our Stock # 25086

This is an antique torchère column. An English, pine and cedar bust or planter stand with hand painted faux marble decoration, dating to the late Victorian period, circa 1900. A decorative and versatile display piece, ideal for classical or eclectic interiors.

- Charming hand painted finish, evocative of rich marble tones and veining
- Classic column silhouette, crafted from quality pine and cedar stocks
- Ideal plinth surface to display sculpture, lamps, jardinière or decorative objects
- Attractive time-worn patina, enhancing the character of the piece
- Stands with poise in entrance halls, salons, or conservatories
- Robust yet elegant, with enduring late Victorian style

Popular in period in grand hotel ballrooms for ease of movement when accentuating different events

A striking antique torchère column stand, offering timeless display utility with tasteful faux marble artistry. Delivered ready for the home.

Search [London Fine for #25086](#) , or scan the QR code for more photos and details

**DIMENSIONS**

Max Width: 30cm (11.75")

Max Depth: 30cm (11.75")

Max Height: 104.5cm (41.25")

