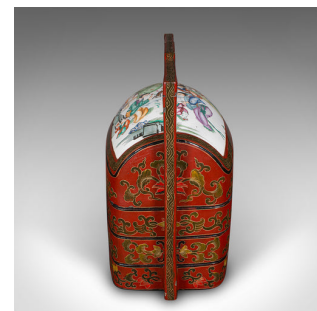
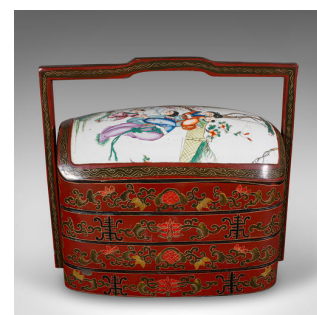
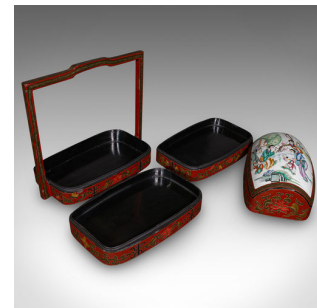


Vintage Dowry Chest, Oriental, Nesting Box, Ceramic, Art Deco, Storage, C.1930



**DESCRIPTION**

Our Stock # 25305

This is a charming vintage dowry chest. An Oriental, lacquered nesting box with ceramic inset, dating to the Art Deco period, circa 1930. Wonderfully decorative and practical, this four-layer chest offers distinctive style and cultural appeal.

- Delightfully presented in a tiered, four-layer format for versatile storage
- Finished in rich lacquered red, highlighted with gilt foliate decoration throughout
- Ceramic inset to dome lid, depicting a vibrant figural scene in traditional dress
- Appealing Art Deco sensibilities blended with classic Oriental design
- Base layer fitted with shaped carry handle, aiding portability and placement
- Ideal for use as a decorative box, jewellery chest, or display piece
- Gently time-worn with characterful patina, commensurate with age

This vintage dowry chest is a distinctive and colourful example that would enhance any eclectic interior or collector's cabinet. Delivered ready for the home.

Search [London Fine for #25305](#) , or scan the QR code for more photos and details

**DIMENSIONS**

Max Width: 40.5cm (16")  
Max Depth: 22.5cm (8.75")  
Max Height: 39cm (15.25")

**LIST PRICE**

£895.00

