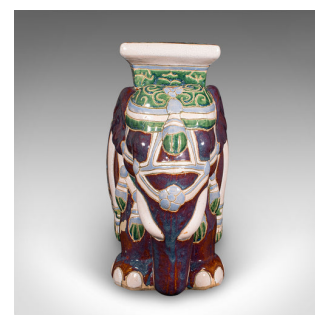


Vintage Elephant Planter Base, Oriental, Ceramic Jardiniere Stand, Mid Century



DESCRIPTION

Our Stock # 25318

This is a charming vintage elephant planter base. An Oriental, ceramic conservatory or garden jardiniere stand, dating to the mid 20th century, circa 1960. Eye-catching form and colour make this a delightful addition to a conservatory or ornamental garden.

- Fascinating elephant form, steeped in Oriental character and decorative appeal
- Ideal as a jardiniere stand or planter plinth, with a flat top for displaying pots or sculptures
- Decorated in a rich palette of green and yellow over a warm vermilion ground
- Accentuated with a finely rendered head dress and ornamental saddle blanket
- Intricate, hand-painted patterns enhance the visual texture and depth
- Crafted in ceramic with a glazed finish, offering a bright, glossy appearance
- Well-suited for interior placement or sheltered outdoor settings
- Presents in good vintage order throughout

This vintage planter base is a wonderfully decorative and functional example, with appealing elephant form and vibrant colour to enliven any setting. Delivered ready to display

DIMENSIONS

Max Width: 21cm (8.25")
 Max Depth: 51cm (20")
 Max Height: 44.5cm (17.5")
 Plinth Top Width: 18cm (7")
 Plinth Top Depth: 20cm (7.75")

LIST PRICE

£895.00

