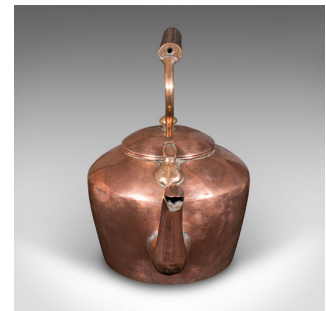


## Antique Fireplace Kettle, English, Copper, Hearth Warmer, Victorian, Circa 1870



## DESCRIPTION

Our Stock # 25377

This is a charming antique fireplace kettle. An English, copper hearth warmer with fine form and character, dating to the Victorian period, circa 1870. Wonderfully tactile and rich in period charm, ideal for fireside display or traditional interior styling.

- Delightful example of Victorian copperware, with rich amber hues throughout
- Presents a desirable, lightly patinated finish, consistent with careful antique use
- Of pleasingly original display order, perfect for hearth or country kitchen settings
- Broad rolled carry handle with ventilation piercings to each bracket end
- Lid dressed with a sweetly formed finial grip, sitting neatly in position
- Gently serpentine spout with shaped lip for attractive profile and visual interest
- Appealing weight in the hand, further reflecting the quality of period copper
- A versatile decorative piece, equally suited to traditional or rustic interior schemes

This antique fireplace kettle is a fine addition to any period fireside or antique kitchen collection, with enduring decorative appeal. Delivered ready for the home.

Search [London Fine for #25377](#) , or scan the QR code for more photos and details

## DIMENSIONS

Max Width: 24cm (9.5")

Max Depth: 37cm (14.5")

Max Height: 35cm (13.75")

## LIST PRICE

£395.00

