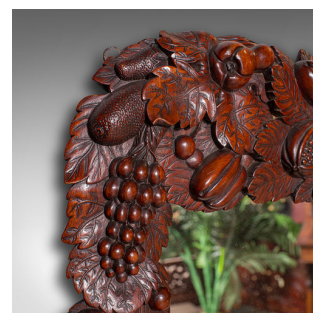
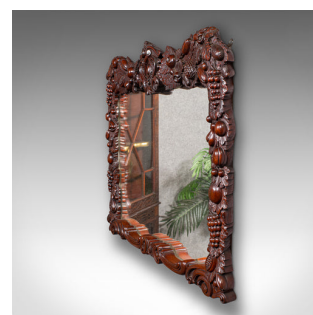


Antique Overmantle Mirror, English, Country House, Carved, Victorian, Circa 1900



DESCRIPTION

Our Stock # 25386

This is a fine antique overmantle mirror. An English, mahogany framed country house mirror, dating to the late Victorian period, circa 1900. A generously sized and highly decorative piece, ideal for mantle or hallway display.

- Of superb decorative proportion, ideal for enhancing chimney breasts or statement walls
- Crafted in select mahogany stocks, displaying deep russet hues and fine grain interest
- The profusely carved fascia features fruiting vine detail, redolent of the Black Forest taste
- Clear and bright mirror plate in good antique order with minimal, light foxing
- Dressed to the rear with a pair of brass mounting loops for ease of wall hanging
- A piece full of late Victorian character, blending rustic charm with fine craftsmanship

This antique overmantle mirror is an excellent example of period craftsmanship, and would be an eye-catching and practical addition to any traditional interior. Delivered ready for the home.

DIMENSIONS

Max Width: 82.5cm (32.5")
Max Depth: 5cm (2")
Max Height: 61.5cm (24.25")
Mirror Plate Width: 64.5cm (25.5")
Mirror Plate Height: 45.5cm (18")

LIST PRICE

£895.00



Search [London Fine for #25386](#), or scan the QR code for more photos and details

+44 (0) 207 1833 511

London Fine Ltd
The Antique Village
The Old Whiteways Cider Factory
Hele, Devon, EX5 4PW

sales@londonfine.co.uk
E. & O. E.