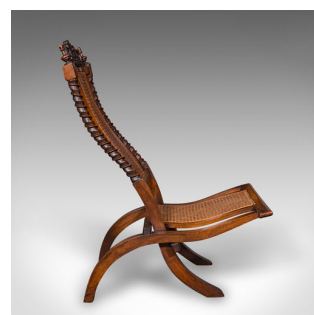


Antique Folding Steamer Chair, English, Bergère, Campaign Lounge Seat, Victorian



DESCRIPTION

Our Stock # 25400

This is an attractive antique folding steamer chair. An English, walnut and bergère campaign lounge seat, dating to the Victorian period, circa 1870. Elegantly crafted for portable comfort, this low-slung seat is steeped in travel heritage and refined design.

- Delightful Victorian steamer chair, showcasing a serpentine form and elegant proportion
- Crafted in select walnut with rich caramel tones and fine grain interest
- Bergère panel to the back rest presented in taut, clean order – comfortably supportive and visually appealing
- Scroll surmount adorns the crest rail, bringing a confident decorative flourish

• Distinguished by barley twist front supports, framing the seat with striking period detail

- Low and long form for relaxed lounging – a seat height of 32cm (12.5"), and a depth of 41cm (16.25")
- Designed to fold away smoothly, ideal for travel, compact storage or seasonal use
- Suitable for use in an orangery, conservatory or terrace, adding campaign-era charm

DIMENSIONS

Max Width: 42cm (16.5")
 Max Depth: 69cm (27.25")
 Max Height: 86.5cm (34")
 Seat Width: 40.5cm (16")
 Seat Depth: 41cm (16.25")
 Seat Height: 32cm (12.5")
 Folded Width: 42cm (16.5")
 Folded Depth: 20.5cm (8")
 Folded Height: 104cm (41")

LIST PRICE

£895.00



This antique steamer chair is a fine example of 19th century campaign furniture, and is a superb example of solid joints and construction, delivered by London Fine Ltd

Search [London Fine for #25400](#) , or scan the QR code for more photos and details
 The Antique Village
 The Old Whiteways Cider Factory
 Hele, Devon, EX5 4PW

sales@londonfine.co.uk

E. & O. E.