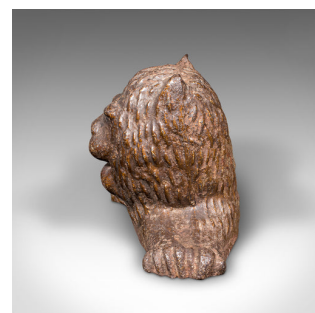
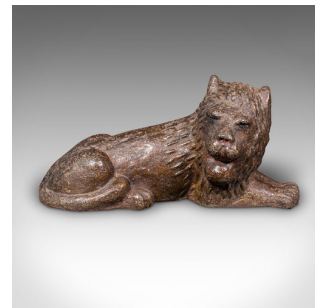


Antique Lion Doorstop, English Cast Iron Figurative Door Keeper, Victorian, 1850



DESCRIPTION

Our Stock # 25404

This is a charming antique lion doorstop, an English cast iron figurative door keeper, dating to the early Victorian period, circa 1850. Delightfully characterful and evocative of heraldic forms, this doorstop brings period appeal and weighty practicality.

- Recumbent lion motif with naïve execution and medieval overtones – a distinctive decorative presence
- Cast iron form with satisfying heft, weighing in at 4.07kg, perfect for securing internal doors
- Displays a rich, mottled brown patina, enhanced by subtle weathering commensurate with age
- Sculpted with emphasis on character and bold form, suggestive of 19th century folk artistry
- Well suited to country cottages, period townhouses or traditional interiors
- Stable base for reliable placement across wood, tile or carpeted floors

This antique lion doorstop is a delightful example of Victorian decorative utility, and offers both form and function in equal measure. Delivered ready for the home.

DIMENSIONS

Max Width: 29.5cm (11.5")
Max Depth: 11cm (4.25")
Max Height: 13.5cm (5.25")

LIST PRICE

£795.00



Search [London Fine for #25404](#) , or scan the QR code for more photos and details

+44 (0) 207 1833 511

London Fine Ltd
The Antique Village
The Old Whiteways Cider Factory
Hele, Devon, EX5 4PW

sales@londonfine.co.uk
E. & O. E.