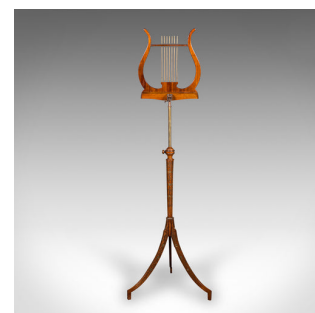
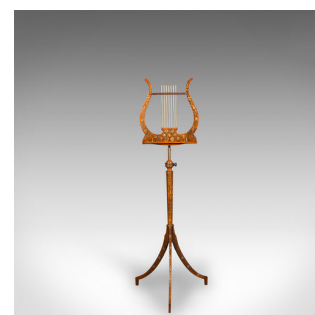
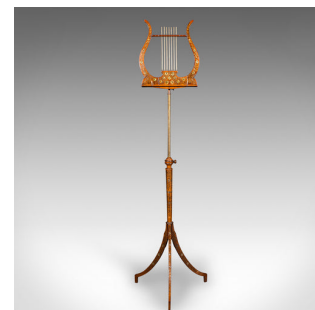


Antique Music Recital Stand, English, Walnut, Adjustable, Regency, Circa 1820



DESCRIPTION

Our Stock # 25391

This is an exceptional antique music recital stand. An English, walnut and boxwood articulated stand dating to the Regency period, circa 1820. Beautifully appointed and rich in decorative charm, ideal for the discerning musician or period interior.

<li class="p1">Fascinating adjustable design, perfectly suited to violinists, conductors or music rooms

<li class="p1">Distinctive lyre-shaped rest, enhanced with brass string motif and refined form

<li class="p1">Height and angle adjustment allows for precise personal positioning

<li class="p1">Wonderfully decorative flower and brass inlay to both the rest and hexagonal stem

<li class="p1">Crafted from select walnut and boxwood, with rich caramel hues and fine grain detail

<li class="p1">Elegant serpentine tri-form base with unusual raised toes for a confident stance

<li class="p1">A rare and desirable example of Regency music furniture, well suited to the home or institution

DIMENSIONS

Max Width: 47.5cm (18.75")

Max Depth: 37.5cm (14.75")

Min Height: 132cm (52")

Max Height: 164.5cm (64.75")

LIST PRICE

£2,950.00

