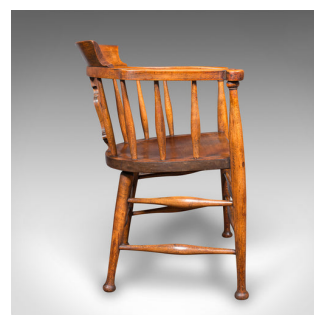
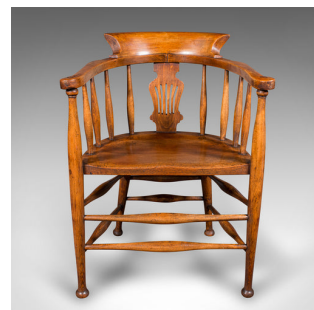


Antique Captain's Chair, English Beech, Home Office, Elbow Seat, Victorian, 1870



DESCRIPTION

Our Stock # 25399

This is an antique captain's chair. An English, solid beech office desk or elbow seat, dating to the Victorian period, circa 1870. Of classic bow form and traditional craftsmanship, this chair offers enduring appeal and comfort for a study or home office setting.

- <li class="p1">Handsome Victorian desk chair with timeless presence and utility
- <li class="p1">Crafted from select beech stocks displaying fine grain and warm caramel hues
- <li class="p1">Bow shaped back rest with gently tapering profile and attractive colour
- <li class="p1">Horseshoe arms flow into outswept scrolled knuckles for comfortable support

- <li class="p1">Eight slender spindles to the rear beneath a shaped spade back splat
- <li class="p1">Saddle shaped seat squab set at a practical height of 44.5cm (17.5")
- <li class="p1">Raised upon a robust quartet of turned legs with bun feet
- <li class="p1">Stabilised with a full set of stretcher rails for enduring strength

DIMENSIONS

Max Width: 60.5cm (23.75")
 Max Depth: 52cm (20.5")
 Max Height: 80.5cm (31.75")
 Seat Width: 46.5cm (18.25")
 Seat Depth: 41cm (16.25")
 Seat Height: 44.5cm (17.5")

LIST PRICE

£895.00



A fine example of a traditional elbow chair, this antique captain's chair will enhance any interior with its Victorian character and solid construction. Solid joints and construction, 44.5cm (17.5") high.

Search [London Fine for #25399](#) , or scan the QR code for more photos and details
 The Antique Village
 The Old Whiteways Cider Factory
 Hele, Devon, EX5 4PW

sales@londonfine.co.uk

E. & O. E.