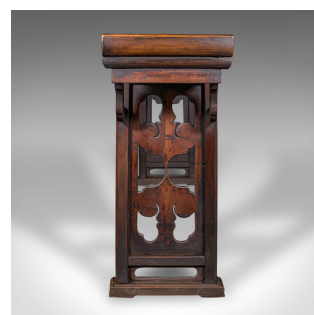


Long Antique Altar Table, Oriental Elm, Display, Hall, Qing Dynasty, Victorian



DESCRIPTION

Our Stock # 25348

This is a long antique altar table. An Oriental, Asian Elm hallway, display or serving table, dating to the early Victorian period, circa 1850. Graced with commanding proportion and classical elegance, this piece exemplifies the decorative finesse of Qing dynasty aesthetics.

<li class="p1">Striking Oriental altar table with Qing dynasty influence, ideal for grand interiors

<li class="p1">Crafted from select Asian elm, presenting deep caramel hues throughout

<li class="p1">Displays in superb antique order, lightly timeworn with desirable patina

<li class="p1">Long display surface, perfect for hallways, serving, or bonsai arrangements

<li class="p1">Charming scrollwork pediments rise at each end, evoking traditional altar designs

<li class="p1">Distinctive shaped apron complements the clean linearity of the frame

<li class="p1">Raised upon pierced fretwork supports with ornate leaf motif

<li class="p1">Standing upon sturdy block legs, providing confident support and balance

DIMENSIONS

Max Width: 227cm (89.25")

Max Depth: 39.5cm (15.5")

Max Height: 97.5cm (38.5")

Surface Height: 91cm (35.75")

Kneehole Width: 134cm (52.75")

Kneehole Height: 82.5cm (32.5")

LIST PRICE

£4,450.00



A beautifully crafted example of early Victorian Oriental furniture, this antique altar table would make a superb statement in any setting, from traditional homes to gallery spaces.

01207 1833 511

Search [London Fine](#) for #25348 , or scan the QR code for more photos and details

London Fine Ltd
 The Antique Village
 The Old Whiteways Cider Factory
 Hele, Devon, EX5 4PW

sales@londonfine.co.uk

E. & O. E.