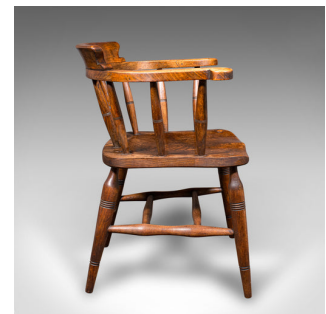




Antique Captain's Bow Chair, English, Beech, Elm, Home Office, Seat, Victorian



DESCRIPTION

Our Stock # 25419

This is an antique captain's bow chair. An English, beech and elm home office or drawing room seat, dating to the late Victorian period, circa 1900. An attractive and comfortable example, brimming with country house character and timeless appeal.

- Elegant late Victorian bow chair with refined proportions and enduring utility
- Crafted from quality beech and elm, offering deep caramel hues and rich grain pattern
- Distinctive bowed back rest with graceful horseshoe-shaped arms for classic comfort
- Raised arms set upon turned spindles at a height of 71cm (28")
- Saddle-shaped seat provides ergonomic support with traditional craftsmanship
- Raised upon turned legs, united by supportive stretcher rails for lasting stability
- Ideal for use in a home study, reading nook or drawing room setting

This is a superb antique captain's chair, offering charm, comfort, and heritage in equal measure. A fine addition to any period interior or refined contemporary workspace. Solid joints and construction, delivered ready for the home.

DIMENSIONS

Max Width: 64cm (25.25")
Max Depth: 54cm (21.25")
Max Height: 78cm (30.75")
Seat Width: 44cm (17.25")
Seat Depth: 41cm (16.25")
Seat Height: 44.5cm (17.5")
Arm Height: 71cm (28")



Search [London Fine for #25419](#), or scan the QR code for more photos and details

+44 (0) 207 1833 511

London Fine Ltd
The Antique Village
The Old Whiteways Cider Factory
Hele, Devon, EX5 4PW

sales@londonfine.co.uk
E. & O. E.