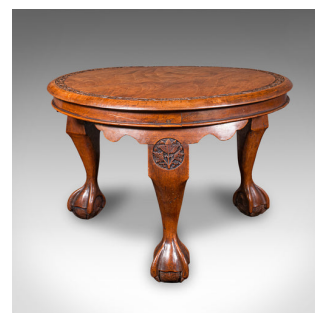




Low Antique Lamp Table, English, Afternoon Tea, Side, Wine, Victorian Circa 1890



DESCRIPTION

Our Stock # 25430

This is a low antique lamp table. An English, mahogany and beech side or tea table, dating to the late Victorian period, circa 1890. With a handsome profile and richly carved detail, this circular table makes for a delightful accent piece.

- Attractive Victorian side table with appealing proportion and low stance
- Crafted from mahogany and beech, presenting rich caramel hues and fine grain interest
 - Envious character from the lightly bowed top, commensurate with age and sun-kissed placement
 - Circular top enhanced with a concentric relief carved border, adding visual texture
 - Wavy sash apron sits gracefully above the knee, adorned with carved leaf medallions
- Raised upon a trio of short cabriole legs, offering elegant curvature
- Stands confidently on exceptional ball and claw feet, adding grandeur
- Displays a gently aged patina, with solid joints and in good order throughout
- Ideal as a lamp table, side table, or tea stand in the classic lounge or hallway

DIMENSIONS

Max Width: 53cm (20.75")
Max Depth: 53cm (20.75")
Max Height: 36.5cm (14.25")

LIST PRICE

£895.00



Search [London Fine for #25430](#) , or scan the QR code for more photos and details