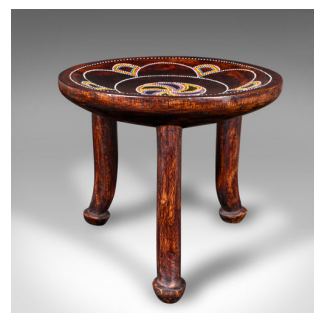
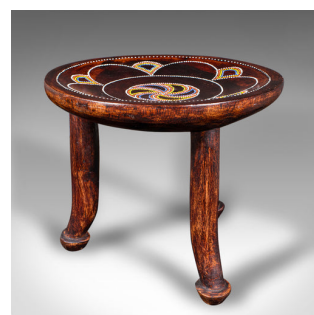


## Small Antique Tribal Side Table, African, Fruitwood, Lamp, Stool, Late Victorian



### DESCRIPTION

Our Stock # 25436

This is a small antique tribal side table. An African, fruitwood lamp table or stool, dating to the late Victorian period, circa 1900. Exhibiting naive indigenous charm, this decorative piece is redolent of the Luo tribe of Kenya, known for their intricate beaded designs.

- <li class="p1">Fascinating late 19th century tribal table with authentic ethnic appeal
- <li class="p1">Crafted from hand-carved fruitwood, showing deep caramel hues and fine grain character
- <li class="p1">Dished circular top adorned with a profusion of colourful beads in red, blue, and yellow
- <li class="p1">Central spiral sun motif displays striking visual interest, resonant of Luo tribal artistry
- <li class="p1">Trio of distinctive legs, each terminating in pronounced toes, offering a bold stance
- <li class="p1">Delightful aged patina and in good original order throughout
- <li class="p1">Equally suited as a decorative lamp table, display plinth, or low stool

### DIMENSIONS

Max Width: 31cm (12.25")  
 Max Depth: 31cm (12.25")  
 Max Height: 27cm (10.75")

### LIST PRICE

£795.00



A rare and captivating example of African tribal craftsmanship, this antique beaded table is certain to add warmth and cultural richness to any interior setting. Solid joints and a delightful aged patina make it a perfect addition to your home.

44(0) 20741833-511

Search [London Fine for #25436](#) , or scan the QR code for more photos and details  
 London Fine Ltd  
 The Antique Village  
 The Old Whiteways Cider Factory  
 Hele, Devon, EX5 4PW

[sales@londonfine.co.uk](mailto:sales@londonfine.co.uk)

E. & O. E.