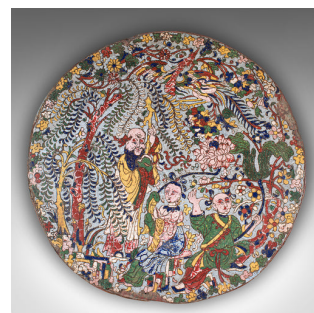


## Antique Display Plate, Oriental, Cloisonne Plaque, Qing Dynasty, Georgian, 1750



### DESCRIPTION

Our Stock # 18.9760

This is an antique display plate. An Oriental, cloisonné plaque in Qing dynasty taste, dating to the mid 18th century, circa 1750. An engaging example of early Chinese cloisonné work, it displays charming naivety and time-worn appeal, sure to capture the attention of collectors and connoisseurs alike.

<li class="p1">Fascinating 18th century craftsmanship, showcasing a naive, handmade quality

<li class="p1">Executed in the cloisonné technique, with enamelled cells brimming with colour and detail

<li class="p1">Delightful figural and foliate motif, presented in a rich, multicolour palette

<li class="p1">A rare survivor of early Qing dynasty craftsmanship, offering authentic Oriental taste

<li class="p1">Equally suited for wall display or cabinet presentation, sure to spark conversation

A characterful and unusual antique cloisonné plaque, this piece offers insight into the artistry of Qing period enamelware, and ideal for collectors of Asian antiques or those seeking a distinctive decorative accent. Delivered ready to display

### DIMENSIONS

Max Width: 39.5cm (15.5")

Max Depth: 39.5cm (15.5")

Max Height: 0.5cm (.25")

### LIST PRICE

£1,950.00



Search London Fine for #18.9760, or scan the QR code for more photos and details.  
 +44 (0) 207 1855 511

London Fine Ltd  
 The Antique Village  
 The Old Whiteways Cider Factory  
 Hele, Devon, EX5 4PW

sales@londonfine.co.uk  
 E. & O. E.