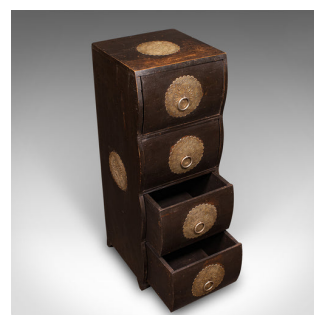


Vintage Barber's Chest of Drawers, Turkish Pine Bombe Front Cabinet, Mid Century



DESCRIPTION

Our Stock # 25332

This is a charming vintage barber's chest of drawers, of Turkish origin, crafted in stained pine and dating to the mid 20th century, circa 1950. A distinctive piece with bold form and deep, inviting tones.

<li class="p1">Delightful mid-century Turkish barber's chest, ideal for stylish interiors or retail display

<li class="p1">Crafted in solid pine, stained to a deep ebonised hue with rich patina and visual depth

<li class="p1">Striking bombe front fascia, creating a bold, curvaceous silhouette across the bank of drawers

<li class="p1">Smooth running drawers with a reassuringly taut motion, denoting quality build

<li class="p1">Drawer fronts dressed with ornate brass foliate medallions, lending refined decorative appeal

<li class="p1">Medallions repeated upon the top and side fascia for added visual interest

<li class="p1">Raised upon a quartet of short, splayed legs, offering a stable and proportionate stance

<li class="p1">In good vintage order with minor time-worn charm and characterful grain

#4400207 1833 511

Ideal for use as a statement piece in a dressing room, the Old White Way, Gider, Factory
 vintage chest offers a distinctive blend of Eastern character and mid-century style.
 The Old White Way, Gider, Factory
 Heli, Devon, EX5 4PW

DIMENSIONS

Max Width: 26cm (10.25")

Max Depth: 25.5cm (10")

Max Height: 70.5cm (27.75")

Drawer Width: 21.5cm (8.5")

Drawer Depth: 20cm (7.75")

Drawer Height: 14cm (5.5")

LIST PRICE

£895.00



sales@londonfine.co.uk

E. & O. E.