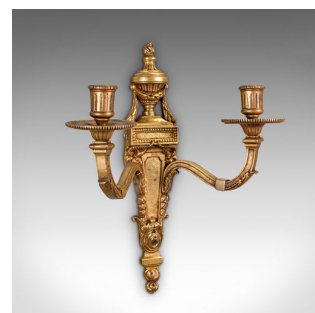
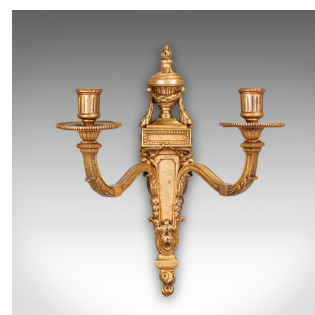
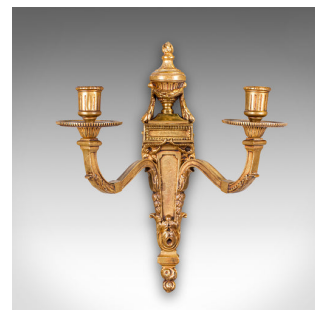


Pair of Antique Candle Sconces, Italian, Grand Tour Brass Wall Lights, Victorian



DESCRIPTION

Our Stock # 25479

This is a superb pair of antique candle sconces, with Italian Grand Tour allure, dating to the mid Victorian period, circa 1860. Radiating classical elegance and fine detailing, these wall lights offer a refined touch to traditional and period interiors.

<li class="p1">Charming Grand Tour wall sconces with desirable mid 19th century Italianate influence

<li class="p1">Presented in quality gilt brass, displaying bright tonality and appealing lustre

<li class="p1">Elegant twin serpentine branches each terminating in candle nozzles

<li class="p1">Three-quarter inch nozzles sized to accept 20mm diameter taper candles

<li class="p1">Distinctive eye and socket couplings provide secure and traditional wall mounting

<li class="p1">Gently aged with light weathering, in keeping with their Victorian heritage

<li class="p1">Ideal for use as ambient lighting or decorative wall accent pieces

A fine pair of antique wall lights, these Italian Grand Tour candle sconces embody Victorian elegance and timeless form. An excellent addition to any classically styled setting, hall, or drawing room. Delivered ready for the home.

+44 (0) 207 1833 511

Search [London Fine](#) for #25479 , or scan the QR code for more photos and details

DIMENSIONS

Max Width: 26.5cm (10.5")

Max Depth: 14.5cm (5.75")

Max Height: 33cm (13")

Nozzle Diameter: 20mm (.75")

LIST PRICE

£1,295.00



sales@londonfine.co.uk

E. & O. E.

London Fine Ltd
 The Antique Village
 The Old Whiteways Cider Factory
 Hele, Devon, EX5 4PW