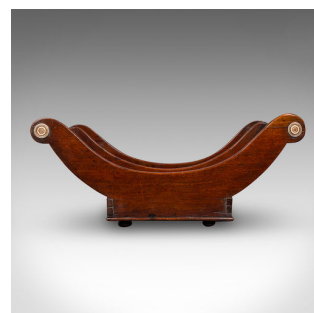


Antique Butler's Stilton Stand, English, Cheese Truckle Crescent, Georgian, 1780



DESCRIPTION

Our Stock # 25496

This is an antique butler's Stilton serving stand. An English, mahogany cheese truckle crescent, dating to the Georgian period, circa 1780. An exquisite and unusual serving piece, rich in charm and form, ideal for the collector or as a distinctive addition to the traditional dining room.

<li class="p1">Delightfully fascinating boat-form, shaped to cradle a pair of Stilton or cheese truckles

<li class="p1">Crafted from quality mahogany stocks with deep caramel hues and fine grain interest

<li class="p1">Serpentine fascia enhanced with scrolled ends and adorned with elegant medallion details

<li class="p1">The surface features two recessed cheese wheel divisions, perfectly proportioned

<li class="p1">Standing upon a quartet of squat bun feet, providing stability and lift

<li class="p1">Exceptional Georgian period craftsmanship with enduring character and presence

<li class="p1">Ideal as a table centrepiece, cheeseboard display, or refined conversation piece

DIMENSIONS

Max Width: 44cm (17.25")

Max Depth: 27.5cm (10.75")

Max Height: 28cm (11")

Division 1 Depth: 8.5cm (3.25")

Division 2 Depth: 15cm (6")

LIST PRICE

£1,795.00

