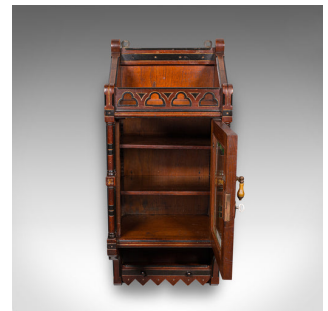


## Antique Reception Hall Cabinet, English, Cupboard, Aesthetic Period, Victorian



### DESCRIPTION

Our Stock # 25497

This is an antique reception hall cabinet. An English, mahogany glazed wall cupboard in Aesthetic Movement taste, dating to the late Victorian period, circa 1890. Exceptionally bold and beautifully crafted, this distinguished cabinet makes a refined addition to a formal reception area, hallway, or drawing room.

<li class="p1">Superb Victorian hall cupboard, with decorative appeal and functional interior

<li class="p1">Select mahogany stocks with fine grain interest and rich caramel hues

<li class="p1">Fascia elevated with ebonised and gilt detailing, accentuating the cabinet's architectural form

<li class="p1">Glazed door inset with a clear bevelled glass plate, offering a bright viewing pane

<li class="p1">Dressed with a turned bone drop handle and oval brass escutcheon — key present

<li class="p1">Opens to reveal a two-shelf interior, each removable or height adjustable for display versatility

<li class="p1">Attractive trefoil arcading crowns the upper gallery, evoking Aesthetic style elegance

<li class="p1">Embellished with a dogtooth motif and a pair of useful key pegs

<li class="p1">Designed for wall mounting upon brass The Old White Ways Cider Factory Hele, Devon, EX5 4PW

### DIMENSIONS

Max Width: 27cm (10.75")

Max Depth: 22cm (8.75")

Max Height: 64.5cm (25.5")

### LIST PRICE

£945.00



44 (0) 207 1833 511 London Fine Ltd

The Antique Village

The Old White Ways Cider Factory

Hele, Devon, EX5 4PW

Search London Fine for #25497 or scan the QR code for more photos and details

sales@londonfine.co.uk

E. & O. E.