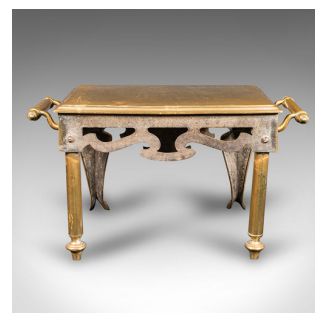
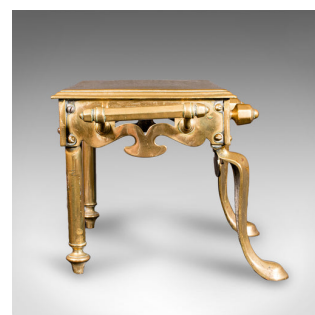


Antique Hearth Footman, English Brass, Fireplace Plate Warmer, Trivet, Victorian



DESCRIPTION

Our Stock # 25326

This is an antique hearth footman. An English, brass fireplace plate warmer or trivet, dating to the late Victorian period, circa 1900. A charming and decorative fireside piece with Georgian influence and excellent maker's detail.

- Fine example of a late 19th century fireside footman, ideal for the traditional hearth
- Crafted in quality brass, displaying a rich golden tonality with light, sympathetic ageing
- Georgian revival styling to the form, lending period elegance to any interior
- Tool rest presented across the fascia, flanked by a pair of rolled brass handles upon shaped mounts
- Engraved with registered design number circa 1900 and the maker's initials W & P
- Stands confidently upon a quartet of legs — broad front knees and cylindrical rear supports
- Polished finish provides a striking lustre, perfect for enhancing the fireside ambience
- Good weight in the hand at a substantial 8.8kg (19.4 lb)

DIMENSIONS

Max Width: 48.5cm (19")
Max Depth: 34.5cm (13.5")
Max Height: 27.5cm (10.75")

LIST PRICE

£985.00



A superb example of Victorian craftsmanship with Georgian stylistic cues, this antique hearth footman is a highly decorative and functional fireside piece, ideal for a period setting or country home interior. Delivered ready for use.

Search [London Fine for #25326](#), or scan the QR code for more photos and details

sales@londonfine.co.uk
E. & O. E.

The Antique Village
The Old Whiteways Cider Factory
Hele, Devon, EX5 4PW