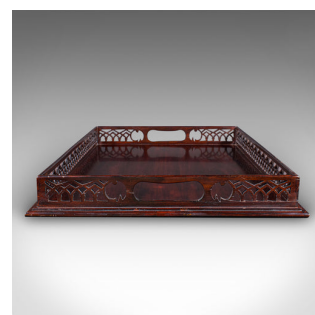




Vintage Presentation Serving Tray, English, Afternoon Tea, Aperitif Server, 1980



DESCRIPTION

Our Stock # 25350

This is a vintage presentation serving tray. An English, mahogany afternoon tea or aperitif server in Regency revival taste, dating to the late 20th century, circa 1980. Handsome in proportion with elegant craftsmanship, ideal for entertaining with timeless style.

<li class="p1">Delightful vintage serving tray, perfect for afternoon tea, cocktail hour, or display

<li class="p1">Crafted from select mahogany, showing superb grain interest and rich russet hues

<li class="p1">Shaped tray sides with pierced fretwork gallery, adding a refined decorative touch

<li class="p1">Redolent of Chippendale and Regency revival motif

<li class="p1">Features inset carry handles for easy service and elegant movement

<li class="p1">Flat tray bed ideal for glassware, cups or aperitif arrangements

<li class="p1">In good vintage order, lightly timeworn commensurate with careful use

DIMENSIONS

Max Width: 47cm (18.5")

Max Depth: 32cm (12.5")

Max Height: 4.5cm (1.75")

Internal Width: 44cm (17.25")

Internal Depth: 29cm (11.5")

Internal Height: 3.5cm (1.5")

LIST PRICE

£395.00



An inviting piece for the traditional or eclectic interior, this mahogany serving tray brings both function and decorative appeal to the dining room, drawing room or sideboard. ~~£445.00~~ ~~20% OFF~~ £355.50

Search [London Fine for #25350](#) , or scan the QR code for more photos and details
The Antique Village
The Old Whiteways Cider Factory
Hele, Devon, EX5 4PW

sales@londonfine.co.uk

E. & O. E.