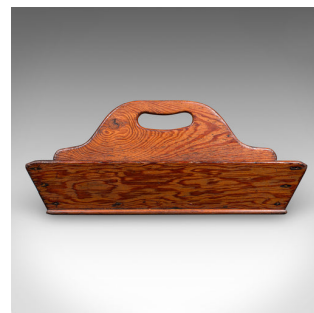
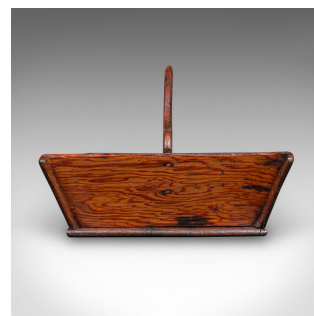


## Antique Country Ladies Garden Trug, English, Outdoor Tool Carry, Victorian, 1870



### DESCRIPTION

Our Stock # 25506

This is an antique country ladies garden trug. An English, pitch pine outdoor tool carry, dating to the Victorian period, circa 1870. Strikingly figured and wonderfully practical, ideal for gardening gloves, tools or afternoon refreshments.

- <li class="p1">Eye-catching Victorian garden trug, imbued with countryside character
- <li class="p1">Crafted from superb pitch pine, displaying bold grain interest and rich caramel hues
- <li class="p1">Central division allows for convenient organisation of garden essentials
- <li class="p1">Tactile inset carry handle adorns the shaped divider
- <li class="p1">Lightly waxed finish highlights the natural tones and accentuates its rustic charm
- <li class="p1">Ideal for display or use in a greenhouse, boot room or outdoor gathering

A delightful example of Victorian utility and elegance, this ladies' garden trug offers both decorative appeal and enduring function – a fine addition to the country home or period garden setting. Solid joints and construction, delivered ready to enjoy.

Search [London Fine for #25506](#) , or scan the QR code for more photos and details

### DIMENSIONS

Max Width: 38.5cm (15.25")  
 Max Depth: 22.5cm (8.75")  
 Max Height: 18cm (7")  
 Division Depth: 9.5cm (3.75")

### LIST PRICE

£595.00

