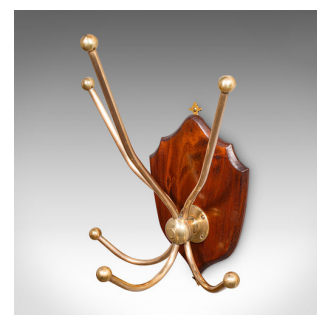
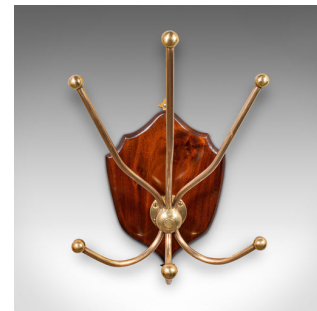


Antique Hunting Lodge Coat Rack, Scottish, Six Branch Hall Shield, Edwardian



DESCRIPTION

Our Stock # 25521

This is a superb antique hunting lodge coat rack. A Scottish, brass and mahogany six branch reception hall shield, dating to the Edwardian period, circa 1910. Exuding the timeless grandeur of a Highland estate, this piece brings stately presence to the entrance hall or country retreat.

- Delightful Edwardian hall rack, rich in Scottish lodge character
- Classic shield motif crafted in select mahogany with fine grain and warm caramel hues
- Striking brass branches with a golden tonality and subtle time worn patina
- Six generously sized hooks offer practical storage for heavy coats, hats or field gear
- Designed to serve the sporting gentleman's residence or a refined hallway interior
 - Brass arms are deeply cast with turned shafts, displaying substantial form and balance
 - Rear dressed with a pair of brass mounting eyes for secure and simple wall display

An exceptional display of Edwardian craftsmanship with stately lodge appeal, this antique coat rack makes a proud and practical statement in any heritage-inspired interior. Solid joints and construction, delivered ready for the home.

DIMENSIONS

Max Width: 36cm (14.25")
Max Depth: 25cm (9.75")
Max Height: 50cm (19.75")

