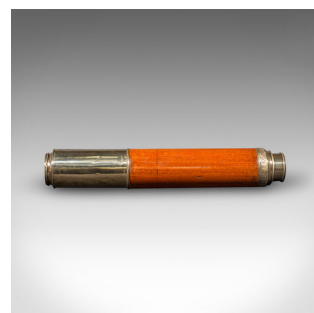


Antique 2 Draw Telescope, English, Maritime, Day or Night, Richardson, Regency



DESCRIPTION

Our Stock # 25466

This is a large antique 2-draw telescope. An English, terrestrial or maritime 'Day or Night' instrument by Richardson of London, dating to the Regency period, circa 1820.

Perfect for bird watching, landscape appreciation, wildlife, or maritime observation. Equally suitable for observing the night sky.

- A striking and substantial example of Regency optical craftsmanship
- Crafted in deep-toned brass, presenting a warm patina and period finish
- Primary barrel dressed in lightly aged walnut, with rich caramel hues and fine grain interest
- Features two smooth-drawing brass tubes, offering a pleasing tactile action
- Engraved to the collar with 'Improved Telescope' – denoting enhanced design features of the era
- Rear draw bears the Richardson, London maker's mark – a respected optician of the time
- Second tube finely inscribed 'Adjustment for Greater Magnification power, for Day or Night'

DIMENSIONS

Closed Length: 37.5cm (14.75")

Fully Drawn: 99.5cm (39.25")

Objective Diameter: 4cm (1.5")

LIST PRICE

£1,195.00

