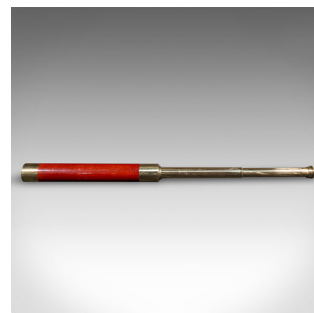


Antique 2 Draw Telescope, English, Brass, Navigational Instrument, Victorian



DESCRIPTION

Our Stock # 25469

This is an antique 2-draw telescope, an English terrestrial or maritime navigational instrument, dating to the late Victorian period, circa 1900.

Perfect for bird watching, landscape appreciation, wildlife, or maritime observation. Equally suitable for observing the night sky.

- <li class="p1">A fine example of late 19th century British optical craftsmanship
-

- <li class="p1">Fitted with a swivel-type dust cover, protecting the eyepiece when closed
-

- <li class="p1">Supplied with a London Fine oak and brass 'Captain's Stand' for display

DIMENSIONS

Closed Length: 36cm (14.25")

Fully Drawn: 75cm (29.5")

Objective Diameter: 4cm (1.5")

LIST PRICE

£1,195.00



Search [London Fine for #25469](#) , or scan the QR code for more photos and details

+44 (0) 207 1833 511

London Fine Ltd
The Antique Village
The Old Whiteways Cider Factory
Hele, Devon, EX5 4PW

sales@londonfine.co.uk
E. & O. E.