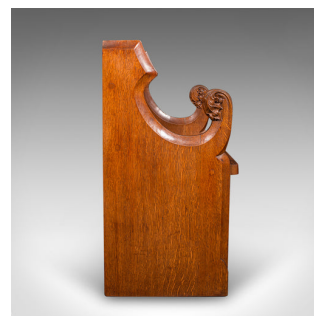


Antique Hall Settle, Scottish Oak Seat & A Half Bench, Gothic Revival, Victorian



DESCRIPTION

Our Stock # 25550

This is an antique hallway settle. A Scottish, oak two seat bench or ecclesiastical pew with Gothic revival taste, dating to the Victorian period, circa 1870.

<li class="p1">Fine example of Scottish Gothic craftsmanship, with rich colour and distinctive form

<li class="p1">Select oak stocks display deep caramel hues and attractive grain interest

<li class="p1">Handsome Gothic revival design, ideal for period interiors or country house hallways

<li class="p1">Striking upswept arms, shaped from solid oak stiles with wonderful curvature

<li class="p1">Knuckle terminus carved with elegant oak leaf relief detail

<li class="p1">Comfortable bench seat height at 42.5cm, perfect for lacing shoes or sitting with pets

<li class="p1">Robust proportions and superb finish throughout, lending practical charm to entrance spaces

<li class="p1">Lightly wax polished for a gently lustrous finish, enhancing natural timber tones

DIMENSIONS

Max Width: 74.5cm (29.25")

Max Depth: 42.5cm (16.75")

Max Height: 81cm (32")

Seat Width: 65cm (25.5")

Seat Depth: 35.5cm (14")

Seat Height: 42.5cm (16.75")

LIST PRICE

£985.00



44 (0) 2071835111
This is an antique hallway bench, this Gothic revival London Fine Ltd any traditional reception area or welcoming entrance hall. So the Antique Village, delivered ready for the home.
The Old Whiteways Cider Factory
Hele, Devon, EX5 4PW

Search London Fine for #25550 or scan the QR code for more photos and details

sales@londonfine.co.uk

E. & O. E.