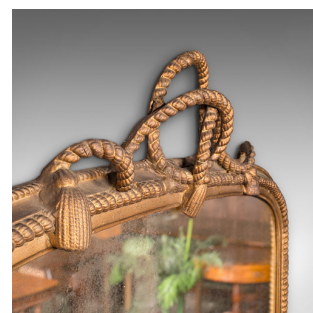
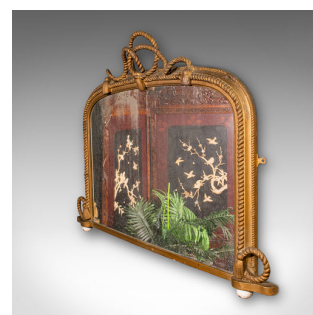
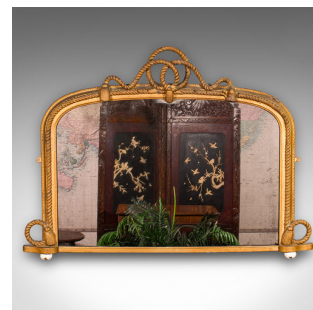


Large Antique Overmantle Mirror, English, Giltwood, Nautical Taste, Victorian



DESCRIPTION

Our Stock # 25231

This is a large antique overmantle mirror. An English, giltwood and mercury glass lounge mirror, presenting distinctive nautical taste, dating to the early Victorian period, circa 1850.

- Of impressive proportion, ideal as a commanding overmantle or hallway statement mirror
- Original mercury glass plate, showing attractive foxed ageing consistent with its 170 year history
- Giltwood frame presents rich golden tones, enhanced by gently timeworn patination
- Features a domed upper section, drawing the eye to the elegant maritime-influenced surmount
- Decorative nautical rope motif traces the frame's outline, beginning at the prominent rope surmount

- Outer frame bordered with a finely executed chased rope braid pattern
- Detailed relief craftsmanship accentuates the frame's architectural forms
- Fitted with a pair of brass hanging loops, ready for secure mounting
- A substantial period mirror offering timeless decorative appeal

DIMENSIONS

Max Width: 117cm (46")
 Max Depth: 10cm (4")
 Max Height: 85cm (33.5")
 Mirror Plate Width: 89cm (35")
 Mirror Plate Height: 59.5cm (23.5")

LIST PRICE

£1,950.00

