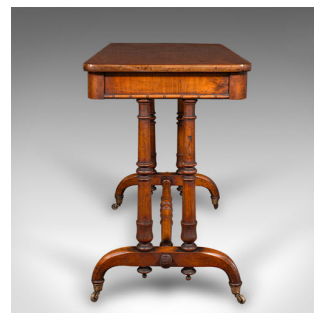


## Antique Hallway Side Table, English, Portico, Writing Desk, Regency, Circa 1820



### DESCRIPTION

Our Stock # 25554

This is an antique hallway side table. An English, flame mahogany portico table or writing desk, dating to the Regency period, circa 1820.

- Beautifully crafted Regency period side table, versatile throughout the home
- Select flame mahogany presents superb figuring, with caramel hues and fine grain interest
- Striking table top enhances the tactile form, with exceptional figuring throughout
- Apron fascia hosts a wide single drawer, with a decorative lower edge serving as a discrete pull

- Elevated by pairs of turned and collared supports, adding grace and structural strength

- Distinctive trestle legs united with a tapered stretcher rail, contributing to the elegant portico silhouette

- Standing upon a quartet of smooth-running brass castors for effortless repositioning
- A desirable example for the refined hallway, living room or study as a striking desk

### DIMENSIONS

Max Width: 91.5cm (36")  
 Max Depth: 47.5cm (18.75")  
 Max Height: 72.5cm (28.5")  
 Drawer Width: 75.5cm (29.75")  
 Drawer Depth: 38.5cm (15.25")  
 Drawer Height: 3.5cm (1.5")  
 Kneehole Height: 62.5cm (24.5")

### LIST PRICE

£4,250.00



A charming piece of early 19th century English craftsmanship, this Regency hall table offers elegance, versatility and a warm antique presence. Solid joints and construction, #4446012071833511.

Search [London Fine for #25554](#), or scan the QR code for more photos and details  
 London Fine Ltd  
 The Antique Village  
 The Old Whiteways Cider Factory  
 Hele, Devon, EX5 4PW

[sales@londonfine.co.uk](mailto:sales@londonfine.co.uk)

E. & O. E.