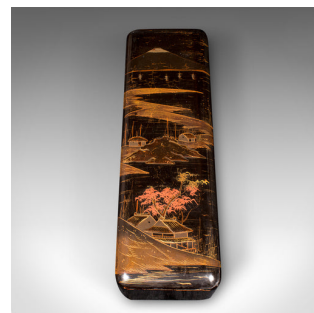
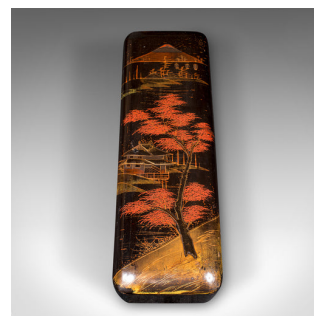


## Pair of Antique Glove Boxes, Japanese Lacquered Lidded Dishes, Victorian, C.1900



### DESCRIPTION

Our Stock # 25487

This is a pair of antique glove boxes. A Japanese, lacquered lidded dish, dating to the late Victorian period, circa 1900.

- <li class="p1">Delightfully decorative Japanese glove boxes with superb oriental elegance
- <li class="p1">Presented in striking cinnabar red and ochre tones upon a deep black lacquer ground
- <li class="p1">Each lid fits neatly over the shallow tray base, ideal for light storage or display
- <li class="p1">Distinctive scenes depict Mount Fuji rising in the distance

- <li class="p1">Foregrounds enriched with temple buildings, winding trees, and traditional landscapes
- <li class="p1">Useful as decorative jewellery boxes, oriental curios, or simply as display accents
- <li class="p1">Gently timeworn with a charming aged patina, commensurate with careful historic handling

### DIMENSIONS

Max Width: 9cm (3.5")  
 Max Depth: 27.5cm (10.75")  
 Max Height: 7cm (2.75")

### LIST PRICE

£495.00



A fine pair of late Victorian Japanese glove boxes, brimming with character and artistry – perfect for all oriental antiques or to grace a well-furnished table. Delivered ready for the home.

Search [London Fine for #25487](#) , or scan the QR code for more photos and details

[sales@londonfine.co.uk](mailto:sales@londonfine.co.uk)  
 E. & O. E.

The Antique Village  
 The Old Whiteways Cider Factory  
 Hele, Devon, EX5 4PW